

Pure FP1

Revision Notes

March 2013

Contents

- 1 Complex Numbers.....3
 - Definitions and arithmetical operations 3
 - Complex conjugate3
 - Properties3
 - Complex number plane, or Argand diagram4
 - Complex numbers and vectors.....4
 - Multiplication by i 5
 - Modulus of a complex number5
 - Argument of a complex number 5
 - Equality of complex numbers6
 - Square roots 6
 - Roots of equations6
- 2 Numerical solutions of equations8
 - Accuracy of solution8
 - Interval bisection..... 8
 - Linear interpolation.....9
 - Newton-Raphson 10
- 3 Coordinate systems 11
 - Parabolas 11
 - Parametric form11
 - Focus and directrix.....11
 - Gradient.....11
 - Tangents and normals12
 - Rectangular hyperbolas..... 12
 - Parametric form13
 - Tangents and normals13

4	Matrices	14
	Order of a matrix	14
	Identity matrix	14
	Determinant and inverse	14
	Linear Transformations	15
	Basis vectors.....	15
	Finding the geometric effect of a matrix transformation	16
	Finding the matrix of a given transformation.....	16
	Rotation matrix.....	17
	Determinant and area factor	17
5	Series.....	18
6	Proof by induction	19
	Summation.....	19
	Recurrence relations	20
	Divisibility problems	20
	Powers of matrices.....	21
7	Appendix.....	22
	Complex roots of a real polynomial equation	22
	Formal definition of a linear transformation	22
	Derivative of x^n , for any integer	23
8	Index	24

1 Complex Numbers

Definitions and arithmetical operations

$i = \sqrt{-1}$, so $\sqrt{-16} = 4i$, $\sqrt{-11} = \sqrt{11}i$, etc.

These are called *imaginary* numbers

Complex numbers are written as $z = a + bi$, where a and $b \in \mathbb{R}$.

a is the *real part* and b is the *imaginary part*.

$+$, $-$, \times are defined in the ‘sensible’ way; division is more complicated.

$$\begin{aligned}(a + bi) + (c + di) &= (a + c) + (b + d)i \\(a + bi) - (c + di) &= (a - c) + (b - d)i \\(a + bi) \times (c + di) &= ac + bdi^2 + adi + bci \\ &= (ac - bd) + (ad + bc)i\end{aligned}\quad \text{since } i^2 = -1$$

$$\begin{aligned}\text{So } (3 + 4i) - (7 - 3i) &= -4 + 7i \\ \text{and } (4 + 3i)(2 - 5i) &= 23 - 14i\end{aligned}$$

Division – this is just rationalising the denominator.

$$\begin{aligned}\frac{3+4i}{5+2i} &= \frac{3+4i}{5+2i} \times \frac{5-2i}{5-2i} && \text{multiply top and bottom by the complex conjugate} \\ &= \frac{23+14i}{25+4} = \frac{23}{29} + \frac{14}{29}i\end{aligned}$$

Complex conjugate

$$z = a + bi$$

The *complex conjugate* of z is $z^* = \bar{z} = a - bi$

Properties

If $z = a + bi$ and $w = c + di$, then

$$\begin{aligned}\text{(i) } \{(a + bi) + (c + di)\}^* &= \{(a + c) + (b + d)i\}^* \\ &= \{(a + c) - (b + d)i\} \\ &= (a - bi) + (c - di)\end{aligned}$$

$$\Leftrightarrow (z + w)^* = z^* + w^*$$

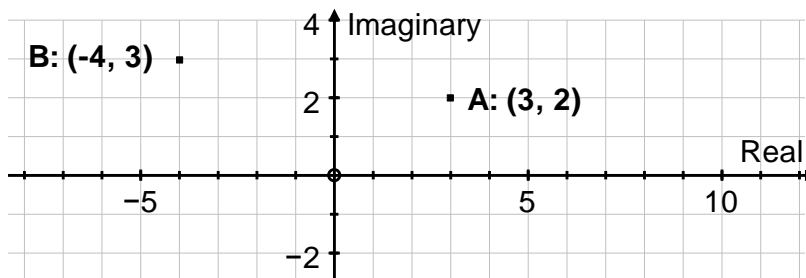
$$\begin{aligned}
\text{(ii)} \quad \{(a + bi)(c + di)\}^* &= \{(ac - bd) + (ad + bc)i\}^* \\
&= \{(ac - bd) - (ad + bc)i\} \\
&= (a - bi)(c - di) \\
&= (a + bi)^*(c + di)^*
\end{aligned}$$

$$\Leftrightarrow (zw)^* = z^* w^*$$

Complex number plane, or Argand diagram

We can represent complex numbers as points on the complex number plane:

$3 + 2i$ as the point $A(3, 2)$, and $-4 + 3i$ as the point $(-4, 3)$.



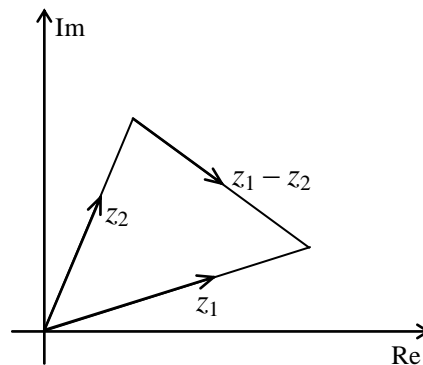
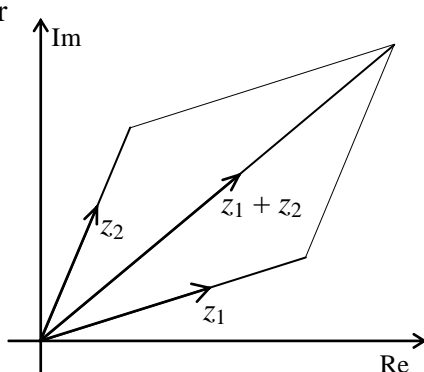
Complex numbers and vectors

Complex numbers under addition (or subtraction) behave just like vectors under addition (or subtraction). We can show complex numbers on the Argand diagram as **either** points **or** vectors.

$$(a + bi) + (c + di) = (a + c) + (b + di) \quad \Leftrightarrow \quad \begin{pmatrix} a \\ b \end{pmatrix} + \begin{pmatrix} c \\ d \end{pmatrix} = \begin{pmatrix} a + c \\ b + d \end{pmatrix}$$

$$(a + bi) - (c + di) = (a - c) + (b - di) \quad \Leftrightarrow \quad \begin{pmatrix} a \\ b \end{pmatrix} - \begin{pmatrix} c \\ d \end{pmatrix} = \begin{pmatrix} a - c \\ b - d \end{pmatrix}$$

or

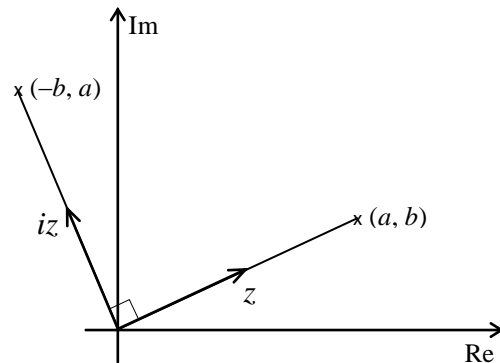


Multiplication by i

$i(3 + 4i) = -4 + 3i$ – on an Argand diagram this would have the effect of a positive quarter turn about the origin.

In general;

$$i(a + bi) = -b + ai$$



Modulus of a complex number

This is just like polar co-ordinates.

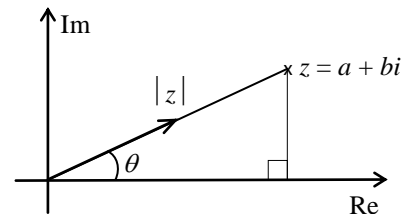
The modulus of z is $|z|$ and

is the length of the complex number

$$|z| = \sqrt{a^2 + b^2}.$$

$$z z^* = (a + bi)(a - bi) = a^2 + b^2$$

$$\Rightarrow z z^* = |z|^2.$$



Argument of a complex number

The argument of z is $\arg z =$ the angle made by the complex number with the positive x -axis.

By convention, $-\pi < \arg z \leq \pi$.

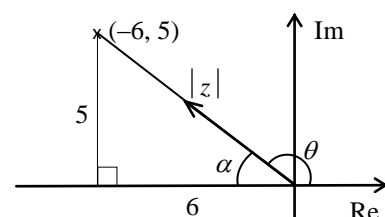
N.B. Always draw a diagram when finding $\arg z$.

Example: Find the modulus and argument of $z = -6 + 5i$.

Solution: First sketch a diagram (it is easy to get the argument wrong if you don't).

$$|z| = \sqrt{6^2 + 5^2} = \sqrt{61}$$

$$\text{and } \tan \alpha = \frac{5}{6} \Rightarrow \alpha = 0.694738276$$



$$\Rightarrow \arg z = \theta = \pi - \alpha = 2.45 \quad \text{to 3 S.F.}$$

Equality of complex numbers

$$a + bi = c + di \quad \Rightarrow \quad a - c = (d - b)i$$

$$\Rightarrow (a - c)^2 = (d - b)^2 i^2 = -(d - b)^2 \quad \text{squaring both sides}$$

$$\text{But } (a - c)^2 \geq 0 \quad \text{and} \quad -(d - b)^2 \leq 0$$

$$\Rightarrow (a - c)^2 = -(d - b)^2 = 0$$

$$\Rightarrow a = c \quad \text{and} \quad b = d$$

$$\text{Thus } a + bi = c + di$$

$$\Rightarrow \text{real parts are equal } (a = c), \text{ and imaginary parts are equal } (b = d).$$

Square roots

Example: Find the square roots of $5 + 12i$, in the form $a + bi$, $a, b \in \mathbb{R}$.

Solution: Let $\sqrt{5 + 12i} = a + bi$

$$\Rightarrow 5 + 12i = (a + bi)^2 = a^2 - b^2 + 2abi$$

$$\text{Equating real parts} \quad \Rightarrow \quad a^2 - b^2 = 5, \quad \mathbf{I}$$

$$\text{equating imaginary parts} \quad \Rightarrow \quad 2ab = 12 \quad \Rightarrow \quad a = \frac{6}{b}$$

$$\text{Substitute in } \mathbf{I} \quad \Rightarrow \quad \left(\frac{6}{b}\right)^2 - b^2 = 5$$

$$\Rightarrow 36 - b^4 = 5b^2 \quad \Rightarrow \quad b^4 + 5b^2 - 36 = 0$$

$$\Rightarrow (b^2 - 4)(b^2 + 9) = 0 \quad \Rightarrow \quad b^2 = 4$$

$$\Rightarrow b = \pm 2, \text{ and } a = \pm 3$$

$$\Rightarrow \sqrt{5 + 12i} = 3 + 2i \quad \text{or} \quad -3 - 2i.$$

Roots of equations

(a) **Any** polynomial equation with complex coefficients has a complex solution.

This is *The Fundamental Theorem of Algebra*, and is too difficult to prove at this stage.

Corollary: Any complex polynomial can be factorised into linear factors over the complex numbers.

- (b) **If** $z = a + bi$ is a root of $\alpha_n z^n + \alpha_{n-1} z^{n-1} + \alpha_{n-2} z^{n-2} + \dots + \alpha_2 z^2 + \alpha_1 z + \alpha_0 = 0$, **and if** all the α_i are **real**, then the conjugate, $z^* = a - bi$ is also a root.

The proof of this result is in the appendix.

- (c) For any polynomial with **real** coefficients, and zeros $a + bi$, $a - bi$, $(z - (a + bi))(z - (a - bi)) = z^2 - 2az + a^2 - b^2$ will be a quadratic factor in which the coefficients are all **real**.
- (d) Using (a), (b), (c), (d) we can see that any polynomial with **real** coefficients can be factorised into a mixture of linear and quadratic factors, all of which have **real** coefficients.

Example: Show that $3 - 2i$ is a root of the equation $z^3 - 8z^2 + 25z - 26 = 0$. Find the other two roots.

Solution: Put $z = 3 - 2i$ in $z^3 - 8z^2 + 25z - 26$

$$= (3 - 2i)^3 - 8(3 - 2i)^2 + 25(3 - 2i) - 26$$

$$= 27 - 54i + 36i^2 - 8i^3 - 8(9 - 12i + 4i^2) + 75 - 50i - 26$$

$$= 27 - 36 - 72 + 32 + 75 - 26 + (-54 + 8 + 96 - 50)i$$

$$= 0 + 0i$$

$\Rightarrow 3 - 2i$ is a root

\Rightarrow the conjugate, $3 + 2i$, is also a root since all coefficients are **real**

$\Rightarrow (z - (3 + 2i))(z - (3 - 2i)) = z^2 - 6z + 13$ is a factor.

Factorising, by inspection,

$$z^3 - 8z^2 + 25z - 26 = (z^2 - 6z + 13)(z - 2) = 0$$

\Rightarrow roots are $z = 3 \pm 2i$, or 2

2 Numerical solutions of equations

Accuracy of solution

When asked to show that a solution is accurate to n D.P., you must look at the value of $f(x)$ ‘half’ below and ‘half’ above, and conclude that

there is a **change of sign** in the **interval**, and the function is **continuous**, therefore there is a **solution in the interval correct to n D.P.**

Example: Show that $\alpha = 2.0946$ is a root of the equation
 $f(x) = x^3 - 2x - 5 = 0$, accurate to 4 D.P.

Solution:

$$f(2.09455) = -0.0000165\dots, \text{ and } f(2.09465) = +0.00997$$

There is a **change of sign** and f is **continuous**

\Rightarrow there is a **root** in **[2.09455, 2.09465]** \Rightarrow **root is $\alpha = 2.0946$ to 4 D.P.**

Interval bisection

(i) Find an interval $[a, b]$ which contains the root of an equation $f(x) = 0$.

(ii) $x = \frac{a+b}{2}$ is the mid-point of the interval $[a, b]$

Find $f\left(\frac{a+b}{2}\right)$ to decide whether the root lies in $\left[a, \frac{a+b}{2}\right]$ or $\left[\frac{a+b}{2}, b\right]$.

(iii) Continue finding the mid-point of each subsequent interval to narrow the interval which contains the root.

Example: (i) Show that there is a root of the equation

$$f(x) = x^3 - 2x - 7 = 0 \text{ in the interval } [2, 3].$$

(ii) Find an interval of width 0.25 which contains the root.

Solution: (i) $f(2) = 8 - 4 - 7 = -3$, and $f(3) = 27 - 6 - 7 = 14$

There is a **change of sign** and f is **continuous** \Rightarrow there is a root in $[2, 3]$.

(ii) Mid-point of $[2, 3]$ is $x = 2.5$, and $f(2.5) = 15.625 - 5 - 7 = 3.625$

\Rightarrow root in $[2, 2.5]$

Mid-point of $[2, 2.5]$ is $x = 2.25$,
 and $f(2.25) = 11.390625 - 4.5 - 7 = -0.109375$

\Rightarrow root in $[2.25, 2.5]$, which is an interval of width 0.25

Linear interpolation

To solve an equation $f(x)$ using linear interpolation.

First, find an interval which contains a root,

second, assume that the curve is a straight line and use similar triangles to find where it crosses the x -axis,

third, repeat the process as often as necessary.

- Example:* (i) Show that there is a root, α , of the equation
 $f(x) = x^3 - 2x - 9 = 0$ in the interval $[2, 3]$.
 (ii) Use linear interpolation once to find an approximate value of α .
 Give your answer to 3 D.P.

Solution: (i) $f(2) = 8 - 4 - 9 = -5$, and $f(3) = 27 - 6 - 9 = 12$

There is a **change of sign** and f is **continuous** \Rightarrow there is a root in $[2, 3]$.

- (ii) From (i), curve passes through $(2, -5)$ and $(3, 12)$, and we assume that the curve is a straight line between these two points.

Let the line cross the x -axis at $(\alpha, 0)$

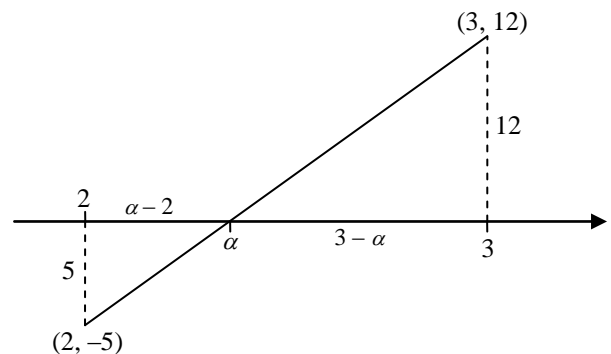
Using similar triangles

$$\frac{3-\alpha}{\alpha-2} = \frac{12}{5}$$

$$\Rightarrow 15 - 5\alpha = 12\alpha - 24$$

$$\Rightarrow \alpha = \frac{39}{17} = 2\frac{5}{17}$$

$$\Rightarrow \alpha = 2.294 \text{ to 3 D.P.}$$



Newton-Raphson

Suppose that the equation $f(x) = 0$ has a root at $x = \alpha$, $\Rightarrow f(\alpha) = 0$

To find an approximation for this root, we first find a value $x = a$ near to $x = \alpha$ (decimal search).

In general, the point where the tangent at P , $x = a$, meets the x -axis, $x = b$, will give a better approximation.

At P , $x = a$, the gradient of the tangent is $f'(a)$,

and the gradient of the tangent is also $\frac{PM}{NM}$.

$$PM = y = f(a) \text{ and } NM = a - b$$

$$\Rightarrow f'(a) = \frac{PM}{NM} = \frac{f(a)}{a-b} \Rightarrow b = a - \frac{f(a)}{f'(a)}$$

Further approximations can be found by repeating the process, which would follow the dotted line converging to the point $(\alpha, 0)$.

This formula can be written as the iteration $x_{n+1} = x_n - \frac{f(x_n)}{f'(x_n)}$

Example: (i) Show that there is a root, α , of the equation

$$f(x) = x^3 - 2x - 5 = 0 \text{ in the interval } [2, 3].$$

(ii) Starting with $x_0 = 2$, use the Newton-Raphson formula to find x_1 , x_2 and x_3 , giving your answers to 3 D.P. where appropriate.

Solution: (i) $f(2) = 8 - 4 - 5 = -1$, and $f(3) = 27 - 6 - 5 = 16$

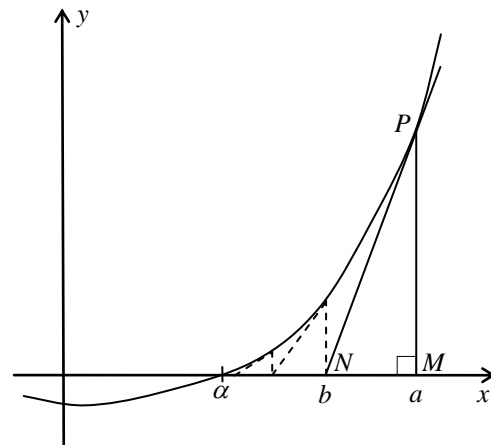
There is a **change of sign** and f is **continuous** \Rightarrow there is a root in $[2, 3]$.

$$(ii) f(x) = x^3 - 2x - 5 \Rightarrow f'(x) = 3x^2 - 2$$

$$\Rightarrow x_1 = x_0 - \frac{f(x_0)}{f'(x_0)} = 2 - \frac{8-4-5}{12-2} = 2.1$$

$$\Rightarrow x_2 = 2.094568121 = 2.095$$

$$\Rightarrow x_3 = 2.094551482 = 2.095$$



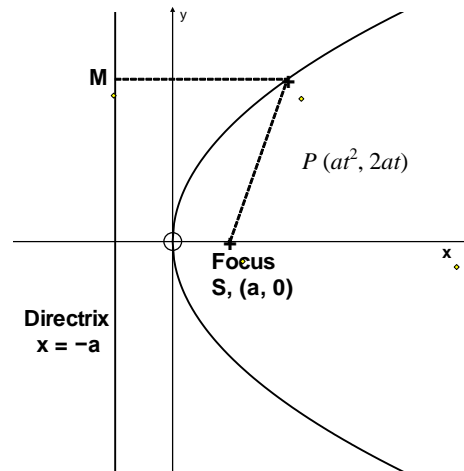
3 Coordinate systems

Parabolas

$y^2 = 4ax$ is the equation of a parabola which passes through the origin and has the x -axis as an axis of symmetry.

Parametric form

$x = at^2$, $y = 2at$ satisfy the equation for all values of t . t is a parameter, and these equations are the parametric equations of the parabola $y^2 = 4ax$.



Focus and directrix

The point $S(a, 0)$ is the *focus*, and

the line $x = -a$ is the *directrix*.

Any point P of the curve is equidistant from the focus and the directrix, $PM = PS$.

$$\text{Proof: } PM^2 = at^2 - (-a) = at^2 + a$$

$$\begin{aligned} PS^2 &= (at^2 - a)^2 + (2at)^2 = a^2t^4 - 2a^2t^2 + a^2 + 4a^2t^2 \\ &= a^2t^4 + 2a^2t^2 + a^2 = (at^2 + a)^2 = PM^2 \end{aligned}$$

$$\Rightarrow PM = PS.$$

Gradient

For the parabola $y^2 = 4ax$, with general point $P, (at^2, 2at)$, we can find the gradient in two ways:

1. $y^2 = 4ax$
 $\Rightarrow 2y \frac{dy}{dx} = 4a \Rightarrow \frac{dy}{dx} = \frac{2a}{y}$
2. At $P, x = at^2, y = 2at$
 $\Rightarrow \frac{dy}{dt} = 2a, \frac{dx}{dt} = 2at$
 $\Rightarrow \frac{dy}{dx} = \frac{dy/dt}{dx/dt} = \frac{2a}{2at} = \frac{1}{t}$

Tangents and normals

Example: Find the equations of the tangents to $y^2 = 8x$ at the points where $x = 18$, and show that the tangents meet on the x -axis.

Solution: $x = 18 \Rightarrow y^2 = 8 \times 18 \Rightarrow y = \pm 12$

$$2y \frac{dy}{dx} = 8 \Rightarrow \frac{dy}{dx} = \pm \frac{1}{3} \quad \text{since } y = \pm 12$$

$$\Rightarrow \text{tangents are } y - 12 = \frac{1}{3}(x - 18) \Rightarrow x - 3y + 18 = 0 \quad \text{at } (18, 12)$$

$$\text{and } y + 12 = -\frac{1}{3}(x - 18) \Rightarrow x + 3y + 18 = 0. \quad \text{at } (18, -12)$$

To find the intersection, add the equations to give

$$2x + 36 = 0 \Rightarrow x = -18 \Rightarrow y = 0$$

\Rightarrow tangents meet at $(-18, 0)$ on the x -axis.

Example: Find the equation of the normal to the parabola given by $x = 3t^2$, $y = 6t$.

Solution: $x = 3t^2$, $y = 6t \Rightarrow \frac{dx}{dt} = 6t$, $\frac{dy}{dt} = 6$,

$$\Rightarrow \frac{dy}{dx} = \frac{dy/dt}{dx/dt} = \frac{6}{6t} = \frac{1}{t}$$

\Rightarrow gradient of the normal is $-t$

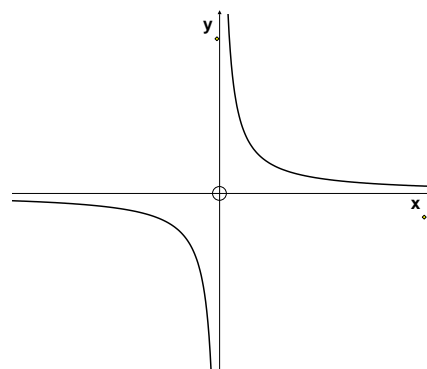
\Rightarrow equation of the normal is $y - 6t = -t(x - 3t^2)$.

Notice that this 'general equation' gives the equation of the normal for any particular value of t :— when $t = -3$ the normal is $y + 18 = 3(x - 27) \Leftrightarrow y = 3x - 99$.

Rectangular hyperbolas

A *rectangular* hyperbola is a hyperbola in which the asymptotes meet at 90° .

$xy = c^2$ is the equation of a rectangular hyperbola in which the x -axis and y -axis are perpendicular asymptotes.



Parametric form

$x = ct$, $y = \frac{c}{t}$ are parametric equations of the hyperbola $xy = c^2$.

Tangents and normals

Example: Find the equation of the tangent to the hyperbola $xy = 36$ at the points where $x = 3$.

Solution: $x = 3 \Rightarrow 3y = 36 \Rightarrow y = 12$

$$y = \frac{36}{x} \Rightarrow \frac{dy}{dx} = -\frac{36}{x^2} = -4 \quad \text{when } x = 3$$

$$\Rightarrow \text{tangent is } y - 12 = -4(x - 3) \Rightarrow 4x + y - 24 = 0.$$

Example: Find the equation of the normal to the hyperbola given by $x = 3t$, $y = \frac{3}{t}$.

Solution: $x = 3t$, $y = \frac{3}{t} \Rightarrow \frac{dx}{dt} = 3$, $\frac{dy}{dt} = \frac{-3}{t^2}$

$$\Rightarrow \frac{dy}{dx} = \frac{dy/dt}{dx/dt} = \frac{-3/t^2}{3} = \frac{-1}{t^2}$$

$$\Rightarrow \text{gradient of the normal is } t^2$$

$$\Rightarrow \text{equation of the normal is } y - \frac{3}{t} = t^2(x - 3t)$$

$$\Rightarrow t^3x - y = 3t^4 - 3.$$

4 Matrices

You must be able to add, subtract and multiply matrices.

Order of a matrix

An $r \times c$ matrix has r rows and c columns;

the first number is the number of Rows

the second number is the number of Columns.

Identity matrix

The identity matrix is $I = \begin{pmatrix} 1 & 0 \\ 0 & 1 \end{pmatrix}$.

Note that $MI = IM = M$ for any matrix M .

Determinant and inverse

Let $M = \begin{pmatrix} a & b \\ c & d \end{pmatrix}$ then the *determinant* of M is

$$\text{Det } M = |M| = ad - bc.$$

To find the *inverse* of $M = \begin{pmatrix} a & b \\ c & d \end{pmatrix}$

Note that $M^{-1}M = MM^{-1} = I$

(i) Find the determinant, $ad - bc$. If $ad - bc = 0$, there is no inverse.

(ii) Interchange a and d (the leading diagonal)
Change sign of b and c , (the other diagonal)
Divide all elements by the determinant, $ad - bc$.

$$\Rightarrow M^{-1} = \frac{1}{ad-bc} \begin{pmatrix} d & -b \\ -c & a \end{pmatrix}.$$

Check:

$$M^{-1}M = \frac{1}{ad-bc} \begin{pmatrix} d & -b \\ -c & a \end{pmatrix} \begin{pmatrix} a & b \\ c & d \end{pmatrix} = \frac{1}{ad-bc} \begin{pmatrix} da - bc & 0 \\ 0 & -bc + ad \end{pmatrix} = \begin{pmatrix} 1 & 0 \\ 0 & 1 \end{pmatrix} = I$$

Similarly we could show that $MM^{-1} = I$.

Example: $M = \begin{pmatrix} 4 & 2 \\ 5 & 3 \end{pmatrix}$ and $MN = \begin{pmatrix} -1 & 2 \\ 2 & 1 \end{pmatrix}$. Find N .

Solution: Notice that $M^{-1}(MN) = (M^{-1}M)N = IN = N$ multiplying on the **left** by M^{-1}

But $MNM^{-1} \neq IN$ we cannot multiply on the **right** by M^{-1}

First find M^{-1}

$$\text{Det } M = 4 \times 3 - 2 \times 5 = 2$$

$$\Rightarrow M^{-1} = \frac{1}{2} \begin{pmatrix} 3 & -2 \\ -5 & 4 \end{pmatrix}$$

Using $M^{-1}(MN) = IN = N$

$$\Rightarrow N = \frac{1}{2} \begin{pmatrix} 3 & -2 \\ -5 & 4 \end{pmatrix} \begin{pmatrix} -1 & 2 \\ 2 & 1 \end{pmatrix} = \frac{1}{2} \begin{pmatrix} -7 & 4 \\ 13 & -6 \end{pmatrix} = \begin{pmatrix} -3.5 & 2 \\ 6.5 & -3 \end{pmatrix}.$$

Linear Transformations

A matrix can represent a transformation, but the point must be written as a column vector before multiplying by the matrix.

Example: The image of $(2, 3)$ under $T = \begin{pmatrix} 4 & 5 \\ 1 & 2 \end{pmatrix}$ is given by $\begin{pmatrix} 4 & 5 \\ 1 & 2 \end{pmatrix} \begin{pmatrix} 2 \\ 3 \end{pmatrix} = \begin{pmatrix} 23 \\ 8 \end{pmatrix}$

\Rightarrow the image of $(2, 3)$ is $(23, 8)$.

Note that the image of $(0, 0)$ is always $(0, 0)$

\Leftrightarrow the **origin never moves** under a matrix (linear) transformation

Basis vectors

The vectors $\mathbf{i} = \begin{pmatrix} 1 \\ 0 \end{pmatrix}$ and $\mathbf{j} = \begin{pmatrix} 0 \\ 1 \end{pmatrix}$ are called *basis* vectors, and are particularly important in describing the geometrical effect of a matrix, and in finding the matrix for a particular geometric transformation.

$$\begin{pmatrix} a & b \\ c & d \end{pmatrix} \begin{pmatrix} 1 \\ 0 \end{pmatrix} = \begin{pmatrix} a \\ c \end{pmatrix} \quad \text{and} \quad \begin{pmatrix} a & b \\ c & d \end{pmatrix} \begin{pmatrix} 0 \\ 1 \end{pmatrix} = \begin{pmatrix} b \\ d \end{pmatrix}$$

$\underline{i} = \begin{pmatrix} 1 \\ 0 \end{pmatrix} \rightarrow \begin{pmatrix} a \\ c \end{pmatrix}$, the *first* column, and $\underline{j} = \begin{pmatrix} 0 \\ 1 \end{pmatrix} \rightarrow \begin{pmatrix} b \\ d \end{pmatrix}$, the *second* column

This is a more important result than it seems!

Finding the geometric effect of a matrix transformation

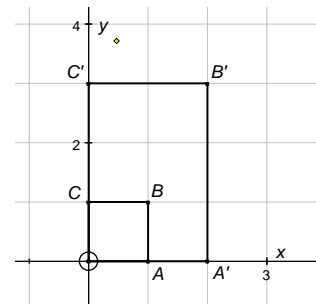
We can easily write down the images of \underline{i} and \underline{j} , sketch them and find the geometrical transformation.

Example: Find the geometrical effect of the matrix $T = \begin{pmatrix} 2 & 0 \\ 0 & 3 \end{pmatrix}$

Solution: Find images of $\underline{i}, \underline{j}$ and $\begin{pmatrix} 1 \\ 1 \end{pmatrix}$, and show on a sketch. Make sure that you letter the points

$$\begin{pmatrix} 2 & 0 \\ 0 & 3 \end{pmatrix} \begin{pmatrix} 1 & 0 & 1 \\ 0 & 1 & 1 \end{pmatrix} = \begin{pmatrix} 2 & 0 & 2 \\ 0 & 3 & 3 \end{pmatrix}$$

From sketch we can see that the transformation is a two-way stretch, of factor 2 parallel to the x -axis and of factor 3 parallel to the y -axis.



Finding the matrix of a given transformation.

Example: Find the matrix for a shear with factor 2 and invariant line the x -axis.

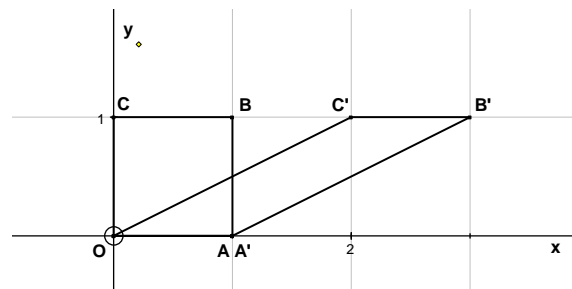
Solution: Each point is moved in the x -direction by a distance of $(2 \times \text{its } y\text{-coordinate})$.

$\underline{i} = \begin{pmatrix} 1 \\ 0 \end{pmatrix} \rightarrow \begin{pmatrix} 1 \\ 0 \end{pmatrix}$ (does not move as it is on the invariant line).

This will be the first column of the matrix $\begin{pmatrix} 1 & * \\ 0 & * \end{pmatrix}$

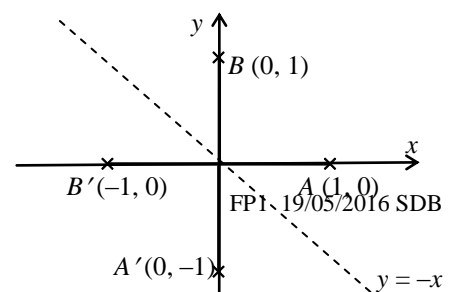
$\underline{j} = \begin{pmatrix} 0 \\ 1 \end{pmatrix} \rightarrow \begin{pmatrix} 2 \\ 1 \end{pmatrix}$. This will be the second column of the matrix $\begin{pmatrix} * & 2 \\ * & 1 \end{pmatrix}$

\Rightarrow Matrix of the shear is $\begin{pmatrix} 1 & 2 \\ 0 & 1 \end{pmatrix}$.



Example: Find the matrix for a reflection in the line $y = -x$.

Solution: First find the images of \underline{i} and \underline{j} . These will be the two columns of the matrix.



$\underline{i} = \begin{pmatrix} 1 \\ 0 \end{pmatrix} \rightarrow \begin{pmatrix} 0 \\ -1 \end{pmatrix}$. This will be the first column of the matrix $\begin{pmatrix} 0 & * \\ -1 & * \end{pmatrix}$

$\underline{j} = \begin{pmatrix} 0 \\ 1 \end{pmatrix} \rightarrow \begin{pmatrix} -1 \\ 0 \end{pmatrix}$. This will be the second column of the matrix $\begin{pmatrix} * & -1 \\ * & 0 \end{pmatrix}$

\Rightarrow Matrix of the reflection is $\begin{pmatrix} 0 & -1 \\ -1 & 0 \end{pmatrix}$.

Rotation matrix

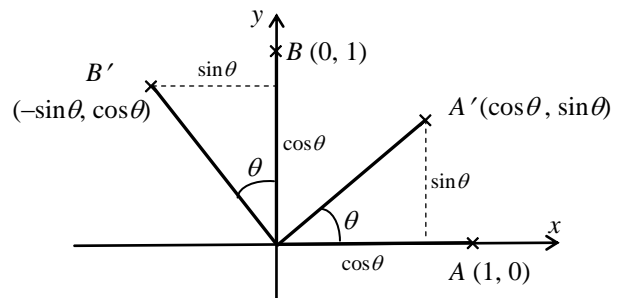
From the diagram we can see that

$$\underline{i} = \begin{pmatrix} 1 \\ 0 \end{pmatrix} \rightarrow \begin{pmatrix} \cos \theta \\ \sin \theta \end{pmatrix},$$

$$\underline{j} = \begin{pmatrix} 0 \\ 1 \end{pmatrix} \rightarrow \begin{pmatrix} -\sin \theta \\ \cos \theta \end{pmatrix}$$

These will be the first and second columns of the matrix

\Rightarrow matrix is $R_\theta = \begin{pmatrix} \cos \theta & -\sin \theta \\ \sin \theta & \cos \theta \end{pmatrix}$.



Determinant and area factor

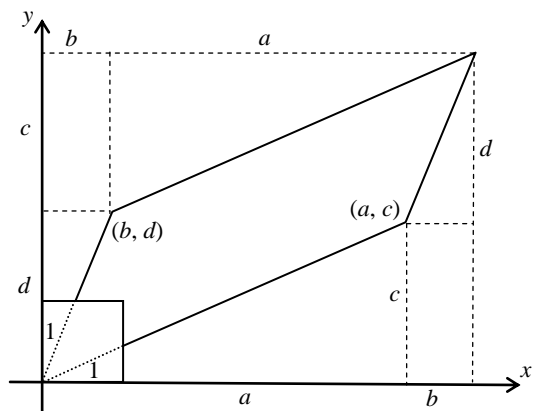
For the matrix $A = \begin{pmatrix} a & b \\ c & d \end{pmatrix}$

$$\begin{pmatrix} a & b \\ c & d \end{pmatrix} \begin{pmatrix} 1 \\ 0 \end{pmatrix} = \begin{pmatrix} a \\ c \end{pmatrix}$$

$$\text{and } \begin{pmatrix} a & b \\ c & d \end{pmatrix} \begin{pmatrix} 0 \\ 1 \end{pmatrix} = \begin{pmatrix} b \\ d \end{pmatrix}$$

\Rightarrow the unit square is mapped on to the parallelogram as shown in the diagram.

The area of the unit square = 1.



The area of the parallelogram = $(a + b)(c + d) - 2 \times (bc + \frac{1}{2}ac + \frac{1}{2}bd)$

$$= ac + ad + bc + bd - 2bc - ac - bd$$

$$= ad - bc = \det A.$$

All squares of the grid are mapped onto congruent parallelograms

\Rightarrow area factor of the transformation is $\det A = ad - bc$.

5 Series

You need to know the following sums

$$\sum_{r=1}^n r = 1 + 2 + 3 + \dots + n = \frac{1}{2}n(n+1)$$

$$\sum_{r=1}^n r^2 = 1^2 + 2^2 + 3^2 + \dots + n^2 = \frac{1}{6}n(n+1)(2n+1)$$

$$\sum_{r=1}^n r^3 = 1^3 + 2^3 + 3^3 + \dots + n^3 = \frac{1}{4}n^2(n+1)^2$$

$$= \left(\frac{1}{2}n(n+1)\right)^2 = \left(\sum_{r=1}^n r\right)^2$$

a fluke, but it helps to remember it

Example: Find $\sum_{r=1}^n r(r^2 - 3)$.

$$\begin{aligned} \text{Solution: } \sum_{r=1}^n r(r^2 - 3) &= \sum_{r=1}^n r^3 - 3 \sum_{r=1}^n r \\ &= \frac{1}{4}n^2(n+1)^2 - 3 \times \frac{1}{2}n(n+1) \\ &= \frac{1}{4}n(n+1)\{n(n+1) - 6\} \\ &= \frac{1}{4}n(n+1)(n+3)(n-2) \end{aligned}$$

Example: Find $S_n = 2^2 + 4^2 + 6^2 + \dots + (2n)^2$.

$$\begin{aligned} \text{Solution: } S_n &= 2^2 + 4^2 + 6^2 + \dots + (2n)^2 = 2^2(1^2 + 2^2 + 3^2 + \dots + n^2) \\ &= 4 \times \frac{1}{6}n(n+1)(2n+1) = \frac{2}{3}n(n+1)(2n+1). \end{aligned}$$

Example: Find $\sum_{r=5}^{n+2} r^2$

$$\text{Solution: } \sum_{r=5}^{n+2} r^2 = \sum_{r=1}^{n+2} r^2 - \sum_{r=1}^4 r^2$$

notice that the top limit is 4 **not** 5

$$= \frac{1}{6}(n+2)(n+2+1)(2(n+2)+1) - \frac{1}{6} \times 4 \times 5 \times 9$$

$$= \frac{1}{6}(n+2)(n+3)(2n+5) - 30.$$

6 Proof by induction

1. Show that the result/formula is true for $n = 1$ (and sometimes $n = 2, 3 \dots$).

Conclude

“therefore the result/formula is true for $n = 1$ ”.

2. Make induction assumption

“Assume that the result/formula is true for $n = k$ ”.

Show that the result/formula must then be true for $n = k + 1$

Conclude

“therefore the result/formula is true for $n = k + 1$ ”.

3. Final conclusion

“therefore the result/formula is true for all positive integers, n , by mathematical induction”.

Summation

Example: Use mathematical induction to prove that

$$S_n = 1^2 + 2^2 + 3^2 + \dots + n^2 = \frac{1}{6}n(n+1)(2n+1)$$

Solution: When $n = 1$, $S_1 = 1^2 = 1$ and $S_1 = \frac{1}{6} \times 1(1+1)(2 \times 1 + 1) = \frac{1}{6} \times 1 \times 2 \times 3 = 1$

$$\Rightarrow S_n = \frac{1}{6}n(n+1)(2n+1) \text{ is true for } n = 1.$$

Assume that the formula is true for $n = k$

$$\Rightarrow S_k = 1^2 + 2^2 + 3^2 + \dots + k^2 = \frac{1}{6}k(k+1)(2k+1)$$

$$\Rightarrow S_{k+1} = 1^2 + 2^2 + 3^2 + \dots + k^2 + (k+1)^2 = \frac{1}{6}k(k+1)(2k+1) + (k+1)^2$$

$$= \frac{1}{6}(k+1)\{k(2k+1) + 6(k+1)\}$$

$$= \frac{1}{6}(k+1)\{2k^2 + 7k + 6\} = \frac{1}{6}(k+1)(k+2)(2k+3)$$

$$= \frac{1}{6}(k+1)\{(k+1)+1\}\{2(k+1)+1\}$$

$$\Rightarrow \text{The formula is true for } n = k + 1$$

$\Rightarrow S_n = \frac{1}{6}n(n+1)(2n+1)$ is true for all positive integers, n , by mathematical induction.

Recurrence relations

Example: A sequence, 4, 9, 19, 39, ... is defined by the recurrence relation

$$u_1 = 4, u_{n+1} = 2u_n + 1. \text{ Prove that } u_n = 5 \times 2^{n-1} - 1.$$

Solution: When $n = 1$, $u_1 = 4$, and $u_1 = 5 \times 2^{1-1} - 1 = 5 - 1 = 4$, \Rightarrow formula true for $n = 1$.

Assume that the formula is true for $n = k$, $\Rightarrow u_k = 5 \times 2^{k-1} - 1$.

From the recurrence relation,

$$u_{k+1} = 2u_k + 1 = 2(5 \times 2^{k-1} - 1) + 1$$

$$\Rightarrow u_{k+1} = 5 \times 2^k - 2 + 1 = 5 \times 2^{(k+1)-1} - 1$$

\Rightarrow the formula is true for $n = k + 1$

\Rightarrow the formula is true for all positive integers, n , by mathematical induction.

Divisibility problems

Considering $f(k+1) - f(k)$, will often lead to a proof,

but a more reliable way is to consider $f(k+1) - m \times f(k)$, where m is chosen to eliminate the exponential term.

Example: Prove that $f(n) = 5^n - 4n - 1$ is divisible by 16 for all positive integers, n .

Solution: When $n = 1$, $f(1) = 5^1 - 4 - 1 = 0$, which is divisible by 16, and so $f(n)$ is divisible by 16 when $n = 1$.

Assume that the result is true for $n = k$, $\Rightarrow f(k) = 5^k - 4k - 1$ is divisible by 16.

Considering $f(k+1) - 5 \times f(k)$ we will eliminate the 5^k term.

$$\begin{aligned} f(k+1) - 5 \times f(k) &= (5^{k+1} - 4(k+1) - 1) - 5 \times (5^k - 4k - 1) \\ &= 5^{k+1} - 4k - 4 - 1 - 5^{k+1} + 20k + 5 = 16k \end{aligned}$$

$$\Rightarrow f(k+1) = 5 \times f(k) + 16k$$

Since $f(k)$ is divisible by 16 (induction assumption), and $16k$ is divisible by 16, then $f(k+1)$ must be divisible by 16,

\Rightarrow the result is true for $n = k + 1$

$\Rightarrow f(n) = 5^n - 4n - 1$ is divisible by 16 for all positive integers, n , by mathematical induction.

Example: Prove that $f(n) = 2^{2n+3} + 3^{2n-1}$ is divisible by 5 for all positive integers n .

Solution: When $n = 1$, $f(1) = 2^{2+3} + 3^{2-1} = 32 + 3 = 35 = 5 \times 7$, and so the result is true for $n = 1$.

Assume that the result is true for $n = k$

$\Rightarrow f(k) = 2^{2k+3} + 3^{2k-1}$ is divisible by 5

We could consider either

$f(k+1) - 2^2 \times f(k)$, which would eliminate the 2^{2k+3} term **I**

or $f(k+1) - 3^2 \times f(k)$, which would eliminate the 3^{2k-1} term **II**

$$\begin{aligned} \mathbf{I} \Rightarrow f(k+1) - 2^2 \times f(k) &= 2^{2(k+1)+3} + 3^{2(k+1)-1} - 2^2 \times (2^{2k+3} + 3^{2k-1}) \\ &= 2^{2k+5} + 3^{2k+1} - 2^{2k+5} - 2^2 \times 3^{2k-1} \end{aligned}$$

$$\Rightarrow f(k+1) - 4 \times f(k) = 9 \times 3^{2k-1} - 4 \times 3^{2k-1} = 5 \times 3^{2k-1}$$

$$\Rightarrow f(k+1) = 4 \times f(k) + 5 \times 3^{2k-1}$$

Since $f(k)$ is divisible by 5 (induction assumption), and $5 \times 3^{2k-1}$ is divisible by 5, then $f(k+1)$ must be divisible by 5.

$\Rightarrow f(n) = 2^{2n+3} + 3^{2n-1}$ is divisible by 5 for all positive integers, n , by mathematical induction.

Powers of matrices

Example: If $M = \begin{pmatrix} 2 & -1 \\ 0 & 1 \end{pmatrix}$, prove that $M^n = \begin{pmatrix} 2^n & 1-2^n \\ 0 & 1 \end{pmatrix}$ for all positive integers n .

Solution: When $n = 1$, $M^1 = \begin{pmatrix} 2^1 & 1-2^1 \\ 0 & 1 \end{pmatrix} = \begin{pmatrix} 2 & -1 \\ 0 & 1 \end{pmatrix} = M$

\Rightarrow the formula is true for $n = 1$.

Assume the result is true for $n = k \Rightarrow M^k = \begin{pmatrix} 2^k & 1-2^k \\ 0 & 1 \end{pmatrix}$.

$$M^{k+1} = MM^k = \begin{pmatrix} 2 & -1 \\ 0 & 1 \end{pmatrix} \begin{pmatrix} 2^k & 1-2^k \\ 0 & 1 \end{pmatrix} = \begin{pmatrix} 2 \times 2^k & 2 - 2 \times 2^k - 1 \\ 0 & 1 \end{pmatrix}$$

$$\Rightarrow M^{k+1} = \begin{pmatrix} 2^{k+1} & 1 - 2^{k+1} \\ 0 & 1 \end{pmatrix} \Rightarrow \text{The formula is true for } n = k + 1$$

$\Rightarrow M^n = \begin{pmatrix} 2^n & 1 - 2^n \\ 0 & 1 \end{pmatrix}$ is true for all positive integers, n , by mathematical induction.

7 Appendix

Complex roots of a real polynomial equation

Preliminary results:

$$\text{I} \quad (z_1 + z_2 + z_3 + z_4 + \dots + z_n)^* = z_1^* + z_2^* + z_3^* + z_4^* + \dots + z_n^*,$$

by repeated application of $(z + w)^* = z^* + w^*$

$$\text{II} \quad (z^n)^* = (z^*)^n$$

$$(zw)^* = z^*w^*$$

$$\Rightarrow (z^n)^* = (z^{n-1}z)^* = (z^{n-1})^*(z)^* = (z^{n-2}z)^*(z)^* = (z^{n-2})^*(z)^*(z)^* \dots = (z^*)^n$$

Theorem: If $z = a + bi$ is a root of $\alpha_n z^n + \alpha_{n-1} z^{n-1} + \alpha_{n-2} z^{n-2} + \dots + \alpha_2 z^2 + \alpha_1 z + \alpha_0 = 0$, and if all the α_i are real, then the conjugate, $z^* = a - bi$ is also a root.

Proof: If $z = a + bi$ is a root of the equation $\alpha_n z^n + \alpha_{n-1} z^{n-1} + \dots + \alpha_1 z + \alpha_0 = 0$

$$\text{then } \alpha_n z^n + \alpha_{n-1} z^{n-1} + \dots + \alpha_2 z^2 + \alpha_1 z + \alpha_0 = 0$$

$$\Rightarrow (\alpha_n z^n + \alpha_{n-1} z^{n-1} + \dots + \alpha_2 z^2 + \alpha_1 z + \alpha_0)^* = 0 \quad \text{since } 0^* = 0$$

$$\Rightarrow (\alpha_n z^n)^* + (\alpha_{n-1} z^{n-1})^* + \dots + (\alpha_2 z^2)^* + (\alpha_1 z)^* + (\alpha_0)^* = 0 \quad \text{using I}$$

$$\Rightarrow \alpha_n (z^n)^* + \alpha_{n-1} (z^{n-1})^* + \dots + \alpha_2 (z^2)^* + \alpha_1 (z)^* + \alpha_0^* = 0 \quad \text{since } (zw)^* = z^*w^*$$

$$\Rightarrow \alpha_n (z^*)^n + \alpha_{n-1} (z^*)^{n-1} + \dots + \alpha_2 (z^*)^2 + \alpha_1 (z^*) + \alpha_0 = 0 \quad \alpha_i \text{ real} \Rightarrow \alpha_i^* = \alpha_i$$

$$\Rightarrow \alpha_n (z^*)^n + \alpha_{n-1} (z^*)^{n-1} + \dots + \alpha_2 (z^*)^2 + \alpha_1 (z^*) + \alpha_0 = 0 \quad \text{using II}$$

$$\Rightarrow z^* = a - bi \text{ is also a root of the equation.}$$

Formal definition of a linear transformation

A linear transformation T has the following properties:

$$(i) \quad T \begin{pmatrix} kx \\ ky \end{pmatrix} = kT \begin{pmatrix} x \\ y \end{pmatrix}$$

$$(ii) \quad T \begin{pmatrix} x_1 & x_2 \\ y_1 & y_2 \end{pmatrix} = T \begin{pmatrix} x_1 \\ y_1 \end{pmatrix} + T \begin{pmatrix} x_2 \\ y_2 \end{pmatrix}$$

It can be shown that **any** matrix transformation is a linear transformation, and that **any** linear transformation can be represented by a matrix.

Derivative of x^n , for any integer

We can use proof by induction to show that $\frac{d}{dx}(x^n) = nx^{n-1}$, for any integer n .

1) We know that the derivative of x^0 is 0 which equals $0x^{-1}$,

since $x^0 = 1$, and the derivative of 1 is 0

$$\Rightarrow \quad \frac{d}{dx}(x^n) = nx^{n-1} \text{ is true for } n = 0.$$

2) We know that the derivative of x^1 is 1 which equals $1 \times x^{1-1}$

$$\Rightarrow \quad \frac{d}{dx}(x^n) = nx^{n-1} \text{ is true for } n = 1$$

Assume that the result is true for $n = k$

$$\Rightarrow \quad \frac{d}{dx}(x^k) = kx^{k-1}$$

$$\Rightarrow \quad \frac{d}{dx}(x^{k+1}) = \frac{d}{dx}(x \times x^k) = x \times \frac{d}{dx}(x^k) + 1 \times x^k \quad \text{product rule}$$

$$\Rightarrow \quad \frac{d}{dx}(x^{k+1}) = x \times kx^{k-1} + x^k = kx^k + x^k = (k+1)x^k$$

$$\Rightarrow \quad \frac{d}{dx}(x^n) = nx^{n-1} \text{ is true for } n = k+1$$

$$\Rightarrow \quad \frac{d}{dx}(x^n) = nx^{n-1} \text{ is true for all positive integers, } n, \text{ by mathematical induction.}$$

3) We know that the derivative of x^{-1} is $-x^{-2}$ which equals $-1 \times x^{-1-1}$

$$\Rightarrow \quad \frac{d}{dx}(x^n) = nx^{n-1} \text{ is true for } n = -1$$

Assume that the result is true for $n = k$

$$\Rightarrow \quad \frac{d}{dx}(x^k) = kx^{k-1}$$

$$\Rightarrow \quad \frac{d}{dx}(x^{k-1}) = \frac{d}{dx}\left(\frac{x^k}{x}\right) = \frac{x \times \frac{d}{dx}(x^k) - x^k \times 1}{x^2} \quad \text{quotient rule}$$

$$\Rightarrow \quad \frac{d}{dx}(x^{k+1}) = \frac{x \times kx^{k-1} - x^k}{x^2} = \frac{(k-1)x^k}{x^2} = (k-1)x^{k-2} = (k-1)x^{(k-1)-1}$$

$$\Rightarrow \quad \frac{d}{dx}(x^n) = nx^{n-1} \text{ is true for } n = k-1$$

We are going backwards (**from** $n = k$ **to** $n = k - 1$), and, since we started from $n = -1$,

$\Rightarrow \frac{d}{dx}(x^n) = nx^{n-1}$ is true for all negative integers, n , by mathematical induction.

Putting 1), 2) and 3), we have proved that

$$\frac{d}{dx}(x^n) = nx^{n-1}, \text{ for any integer } n.$$

8 Index

Appendix, 22

Complex numbers

Argand diagram, 4

argument, 5

arithmetical operations, 3

complex conjugate, 3

complex number plane, 4

definitions, 3

equality, 6

modulus, 5

multiplication by i , 5

polynomial equations, 6

similarity with vectors, 4

square roots, 6

Complex roots of a real polynomial equation, 22

Derivative of x^n , for any integer, 23

Determinant

area factor, 17

Linear transformation

formal definition, 22

Matrices

determinant, 14

identity matrix, 14

inverse matrix, 14

order, 14

Matrix transformations

area factor, 17

basis vectors, 15

finding matrix for, 16

geometric effect, 16

rotation matrix, 17

Numerical solutions of equations

accuracy of solution, 8

interval bisection, 8

linear interpolation, 9

Newton Raphson method, 10

Parabolas

directrix, 11

focus, 11

gradient - parametric form, 11

normal - parametric form, 12

parametric form, 11

tangent - parametric form, 12

Proof by induction

divisibility problems, 20

general principles, 19

powers of matrices, 21

recurrence relations, 20

summation, 19

Rectangular hyperbolas

gradient - parametric form, 13

parametric form, 12

tangent - parametric form, 13

Series

standard summation formulae, 18

Transformations

area factor, 17

basis vectors, 15

finding matrix for, 16

geometric effect, 16

matrices, 16

rotation matrix, 17